

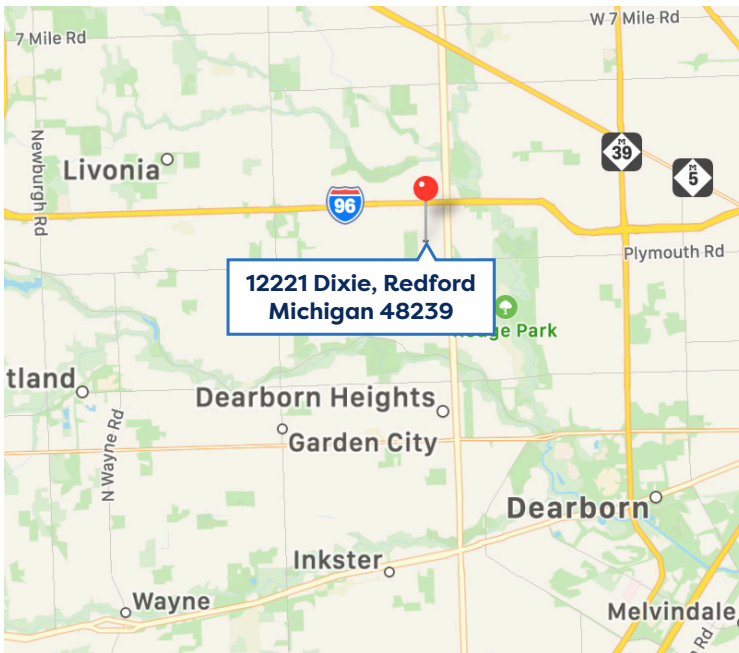
**12221 Dixie, Redford  
Michigan 48239**

**Approximately 12,000 SF  
M2 Zoning**

# **FOR SALE/ LEASE**



**12221 Dixie, Redford  
Michigan 48239**



## **Property Highlights**

**Approximately 12,000 SF  
Heavy Power  
M2 Zoning  
Executive Style Offices  
Epoxy Floors  
(2) 5 Ton Cranes  
12 x 14 OHD**

<b>For Sale</b>	<b>Lease Rate:</b>
<b>\$875,000</b>	<b>\$7.50/PSF</b>

For more information, please contact:

**BRIAN CRAWFORD**  
(248) 561-9586

[crawford@crabillandcompany.com](mailto:crawford@crabillandcompany.com)

**CRABILL & COMPANY**

(734) 261-8200

33640 Schoolcraft Rd.

Livonia, MI 48150



# 12221 Dixie, Redford, Michigan 48239

## FOR SALE - \$875,000 LEASE RATE - \$7.50/PSF



**Approximately  
12,000 SF**



For more information, please contact:

**BRIAN CRAWFORD**

(248) 561-9586

[crawford@crabillandcompany.com](mailto:crawford@crabillandcompany.com)

**CRABILL & COMPANY**

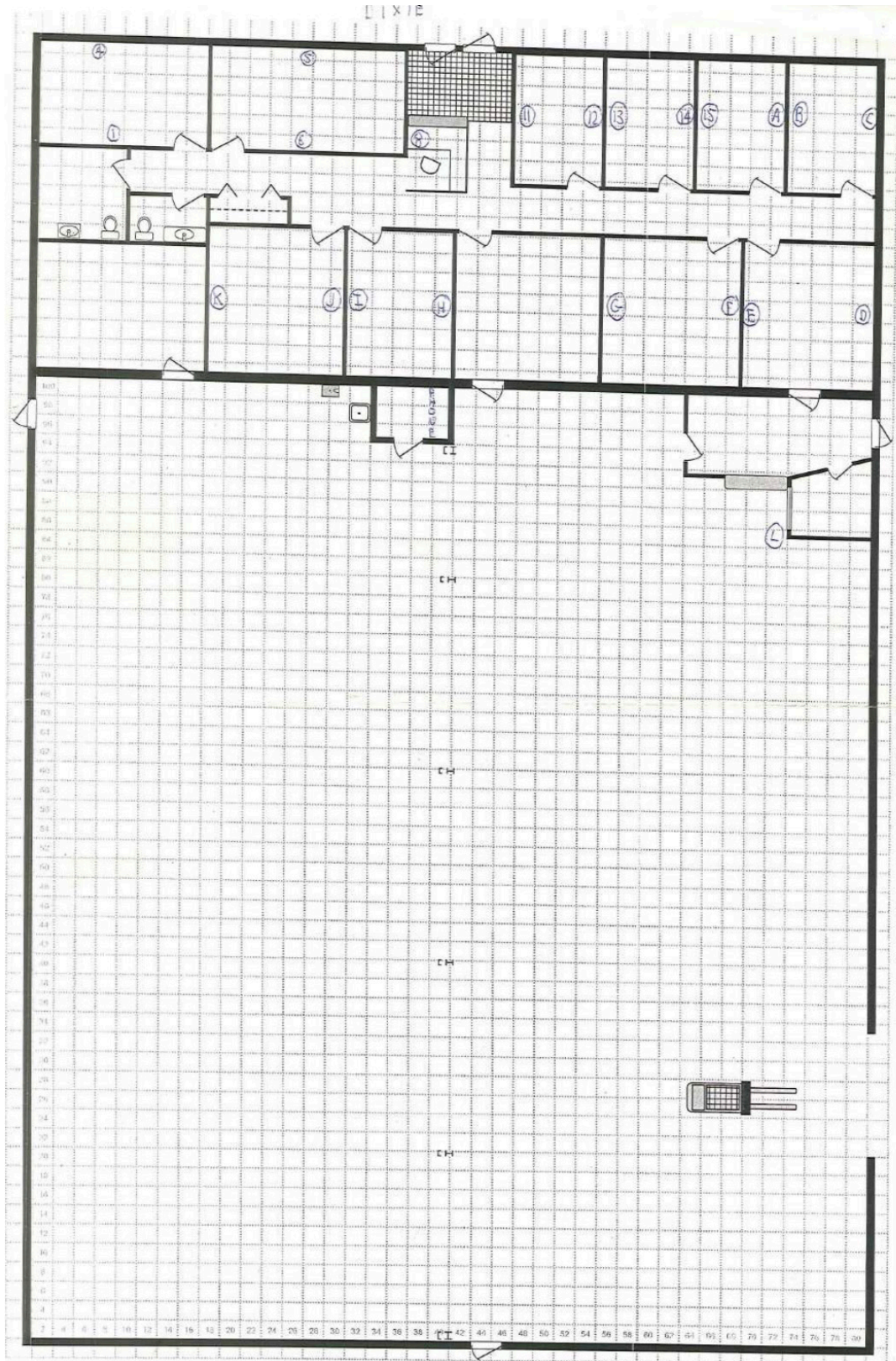
(734) 261-8200

33640 Schoolcraft Rd.

Livonia, MI 48150



**12221 Dixie, Redford, Michigan 48239**  
**FOR SALE - \$875,000    LEASE RATE - \$7.50/PSF**



For more information, please contact:

**BRIAN CRAWFORD**

(248) 561-9586

[crawford@crabillandcompany.com](mailto:crawford@crabillandcompany.com)

**CRABILL & COMPANY**

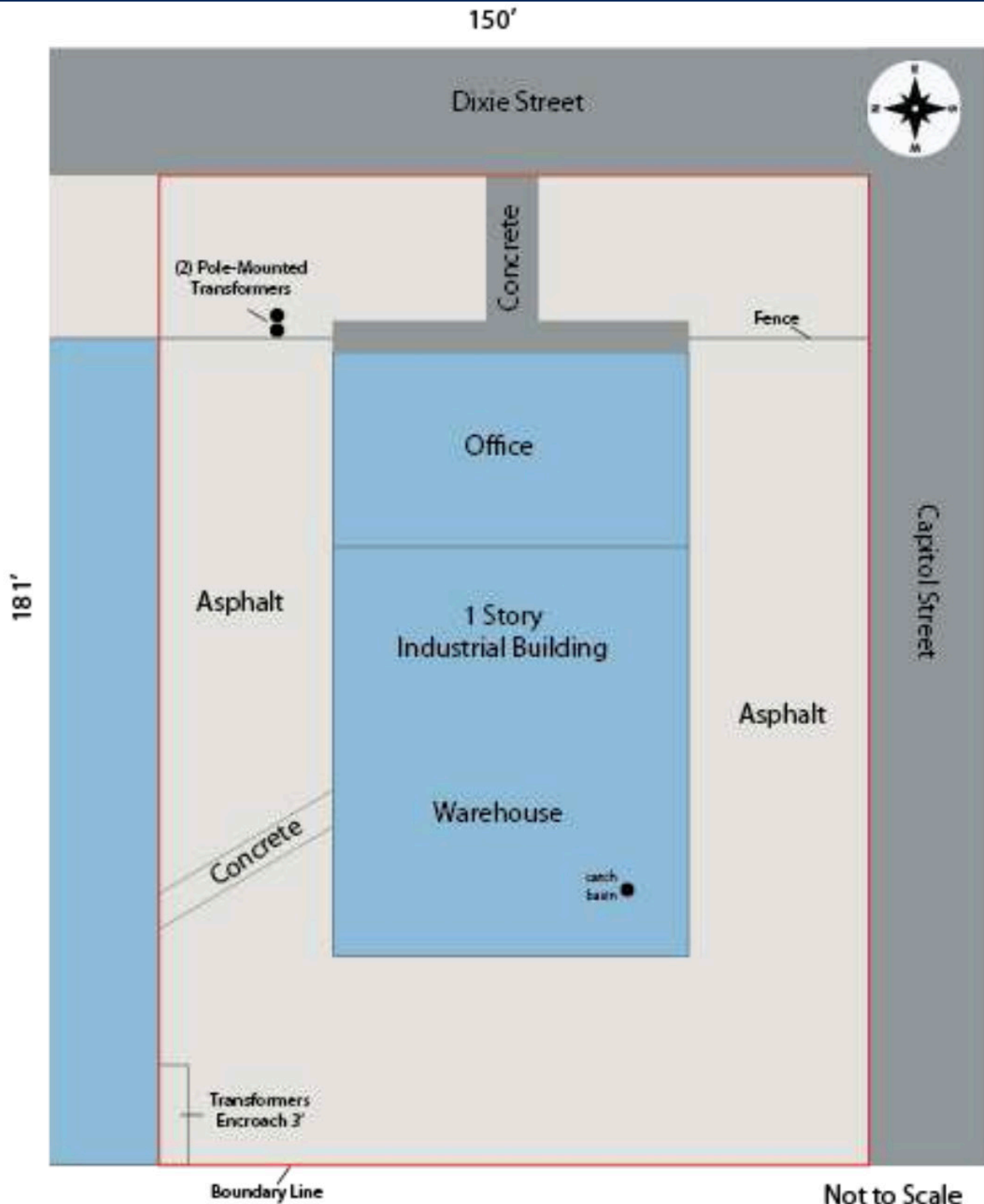
(734) 261-8200

33640 Schoolcraft Rd.

Livonia, MI 48150

# 12221 Dixie, Redford, Michigan 48239

## FOR SALE - \$875,000    LEASE RATE - \$7.50/PSF



The information contained herein has been given to us by the owner of the property or other sources we deem reliable. We have no reason to doubt its accuracy, but we do not guarantee it. All information should be verified prior to lease or purchase.

For more information, please contact:

**BRIAN CRAWFORD**

(248) 561-9586

[crawford@crabillandcompany.com](mailto:crawford@crabillandcompany.com)

**CRABILL & COMPANY**

(734) 261-8200

33640 Schoolcraft Rd.

Livonia, MI 48150