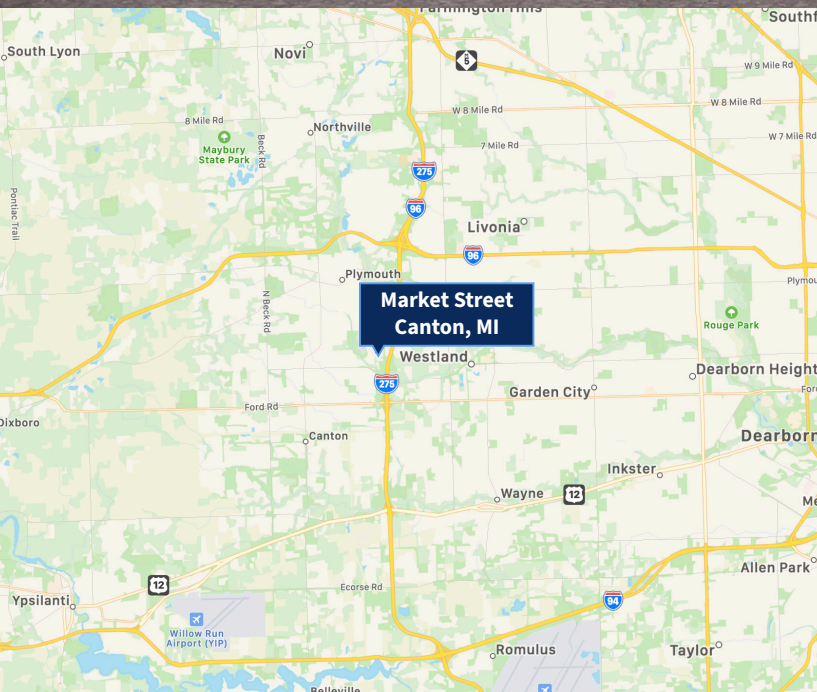


**Market Street
Canton, MI
32,108 SF
BUILD TO SUIT**

FOR LEASE

Building C



Property Highlights

- 32,108 SF - BUILD TO SUIT
- Zoned Light Industrial
- 2 Docks
- 1 - 12'x14' OHD
- 21.5' Clear Ceiling Height
- 480 - 3 Phase Power
- 400 - 1000 AMPS
- Utilities Ready
- Ample Parking
- 1 Mile from Ann Arbor Rd Exit & I-275
- 1.25 Miles from Ford Rd. Exit & I-275
- Market Street Industrial Park - 4 buildings

For more information, please contact:

BEN CRABILL III
(313) 720-0990

ben3@crabillandcompany.com

CRABILL & COMPANY

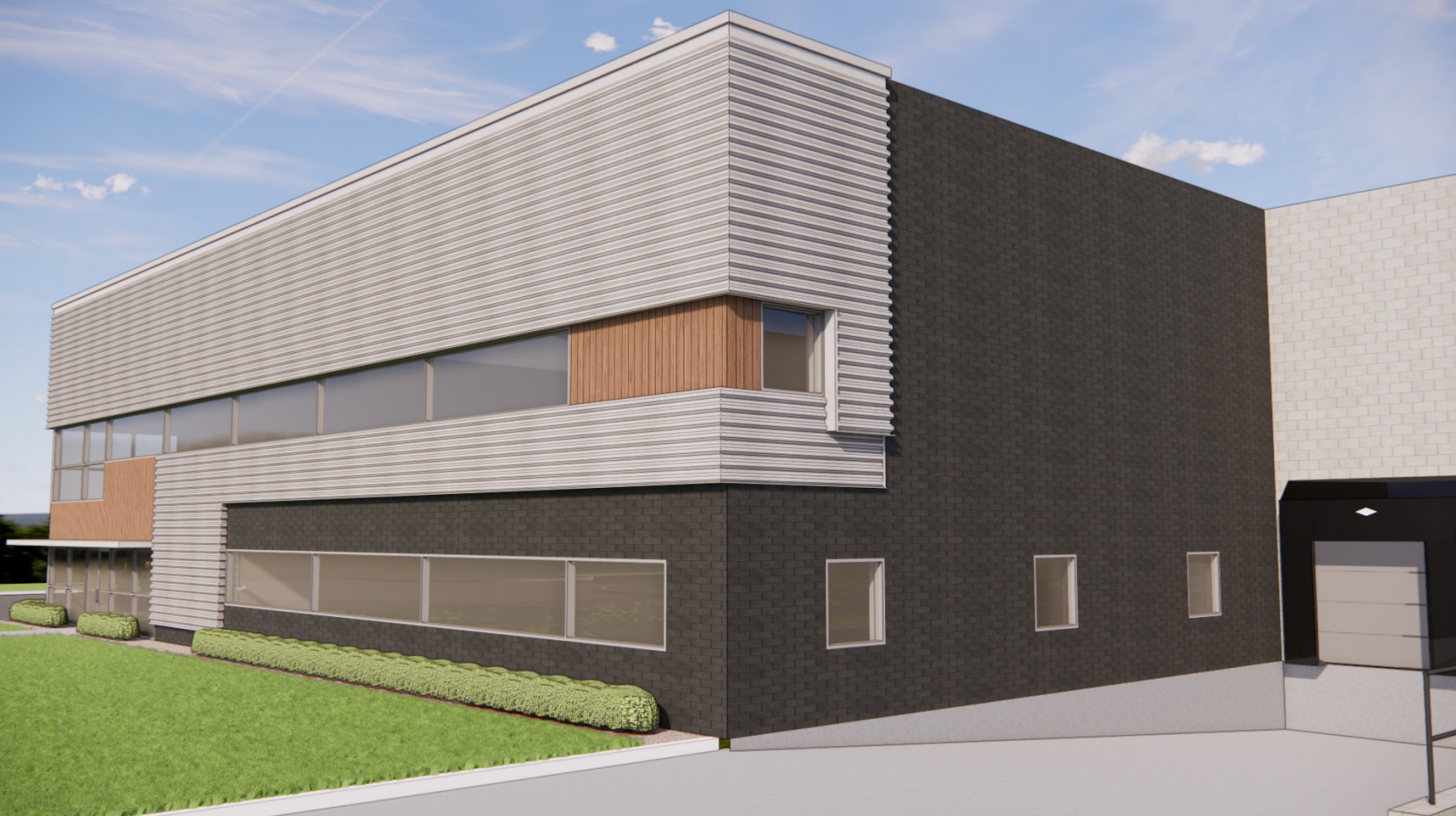
(734) 261-8200

33640 Schoolcraft Rd.
Livonia, MI 48150

**Market Street
Canton, MI
32,108 SF
BUILD TO SUIT**

FOR LEASE

Building C



Property Highlights

- 32,108 SF - BUILD TO SUIT
- Zoned Light Industrial
- 2 Docks
- 1 - 12'x14' OHD
- 21.5' Clear Ceiling Height
- 480 - 3 Phase Power
- 400 - 1000 AMPS
- Utilities Ready
- Ample Parking
- 1 Mile from Ann Arbor Rd Exit & I-275
- 1.25 Miles from Ford Rd. Exit & I-275
- Market Street Industrial Park - 4 buildings

For more information, please contact:

BEN CRABILL III
(313) 720-0990

ben3@crabillandcompany.com

CRABILL & COMPANY

(734) 261-8200

33640 Schoolcraft Rd.

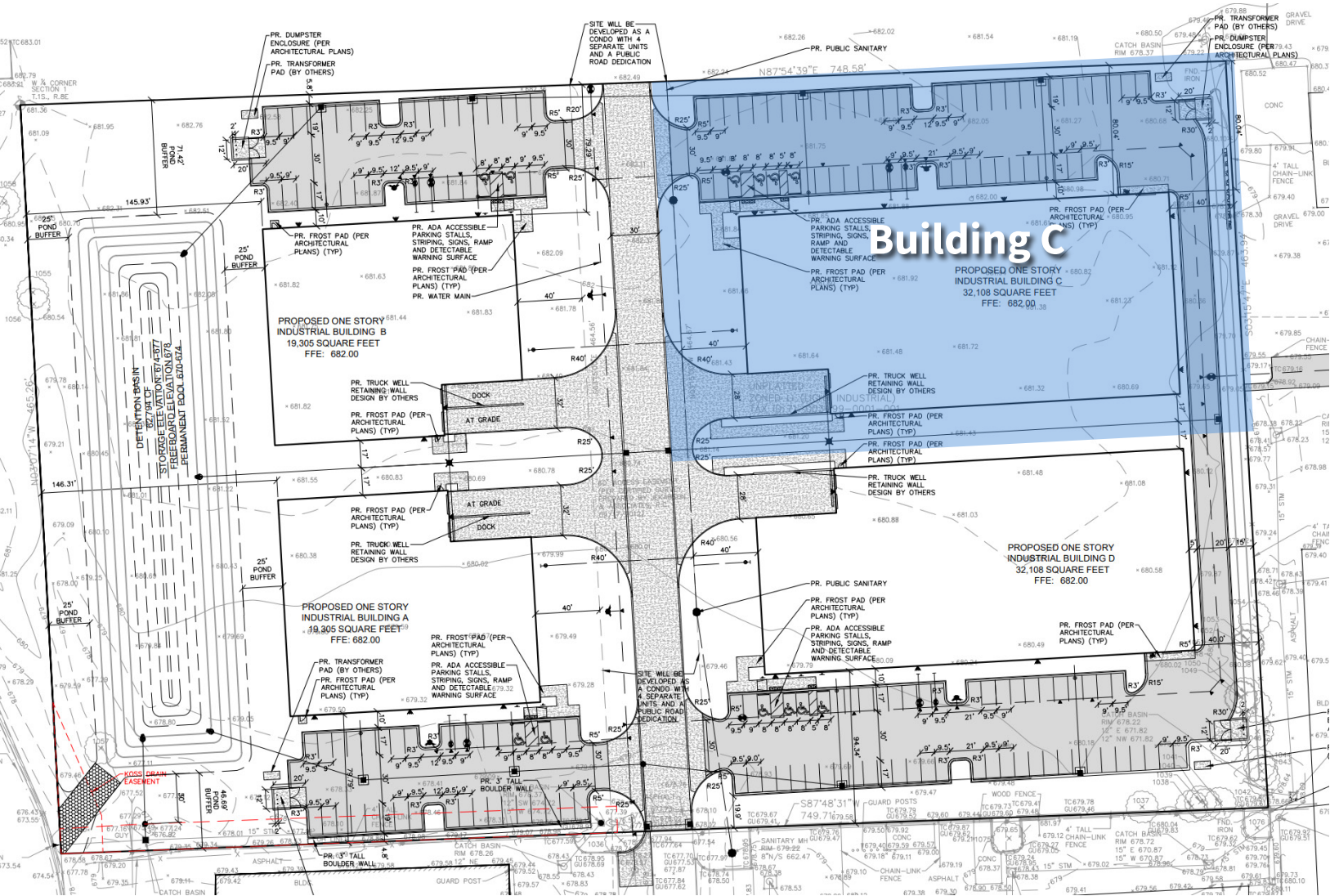
Livonia, MI 48150

FOR LEASE

Building C



SITE PLAN



BEN CRABILL III
(313) 720-0990

CRABILL & COMPANY
(734) 261-8200
33640 Schoolcraft Rd.
Livonia, MI 48150

information is subject to verification and no liability or omissions is assumed. Price and terms are subject to change and listing withdrawn without notice.