



FOR SALE/ LEASE

2424 Kansas Ave
Flint, MI 48506

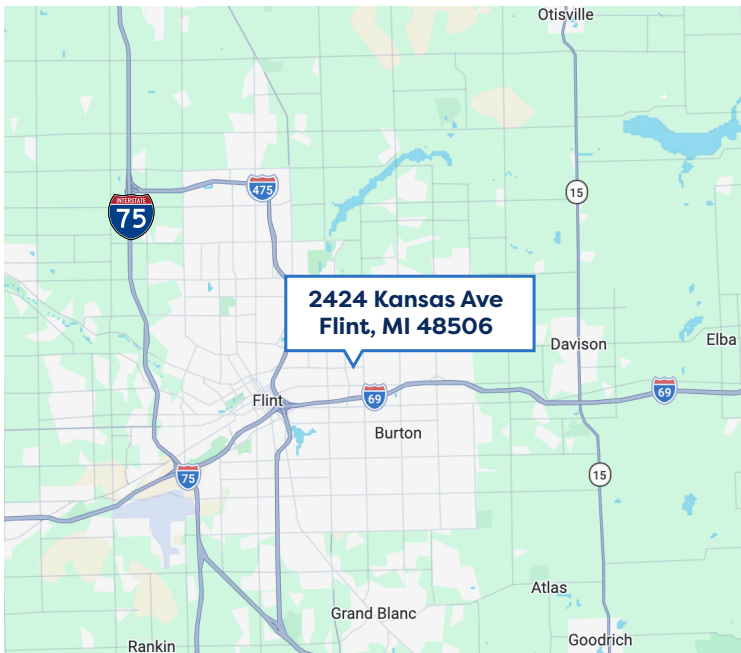
24,000 SF
1.25 Acres



2424 Kansas Ave
Flint, MI 48506

Property Highlights

- 18' - 20' ceilings
- (3) truck wells
- Heavy power
- Close to freeway
- Open layout
- Masonry construction
- Clear-span warehouse
- gas/lighting utilities
- parking ~0.83/1,000 SF
- Large 1.25-acre lot – Plenty of room for trucks, extra parking, storage, or yard use
- Industrial zoned



FOR SALE \$699,000/
LEASE \$7.00 PSF

For more information, please contact:

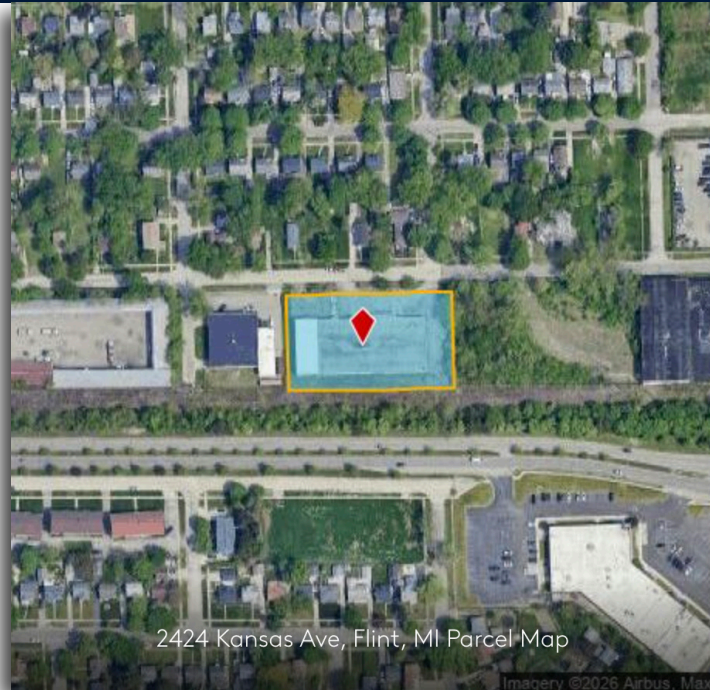
BRIAN CRAWFORD
(248) 561-9586
crawford@crabillco.com

CRABILL & COMPANY
(734) 261-8200
33640 Schoolcraft Rd.
Livonia, MI 48150



2424 Kansas Ave Flint, MI 48506

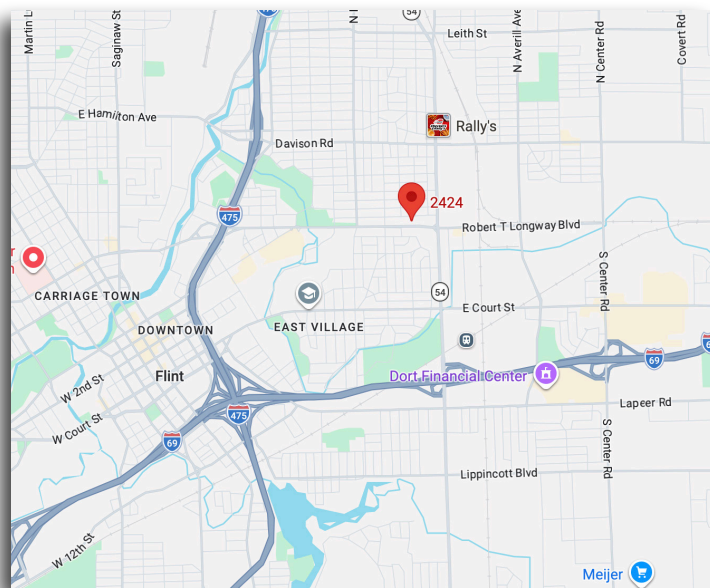
FOR SALE \$699,000/LEASE \$7.00 PSF



2424 Kansas Ave, Flint, MI Parcel Map



24,000 sq ft



For more information, please contact:

BRIAN CRAWFORD
(248) 561-9586
crawford@crabillco.com

CRABILL & COMPANY
(734) 261-8200
33640 Schoolcraft Rd.
Livonia, MI 48150