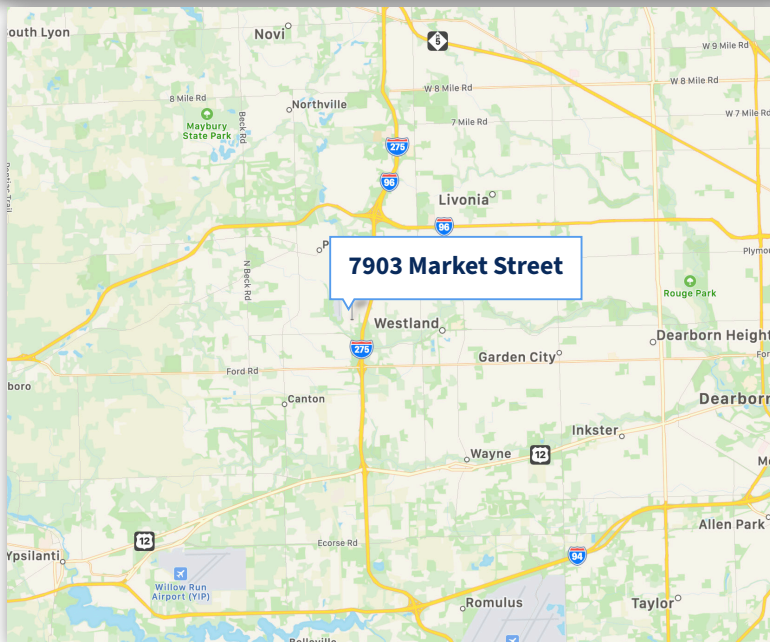




FOR SALE/ LEASE

7903 Market Street
Canton, MI

19,305 SF
BUILD TO SUIT



Property Highlights

- 19,305 SF- BUILD TO SUIT
- Zoned Light Industrial
- 1 Dock
- 1 - 12'x14' OHD
- 21.5' Clear Ceiling Height
- 480 - 3 Phase Power
- 400 - 1000 AMPS
- Utilities Ready
- Ample Parking
- 1 Mile from Ann Arbor Rd Exit & I-275
- 1.25 Miles from Ford Rd. Exit & I-275
- Market Street Industrial Park - 4 buildings

For more information, please contact:

BEN CRABILL III
(313) 720-0990

ben3@crabillandcompany.com

CRABILL & COMPANY

(734) 261-8200

33640 Schoolcraft Rd.

Livonia, MI 48150



FOR SALE/ LEASE

7903 Market Street
Canton, MI

19,305 SF
BUILD TO SUIT



Property Highlights

- **Prime Canton Location** – Strategically positioned in a growing industrial submarket with excellent access to I-275 and major roadways
- **Flexible Light Industrial Use** – Ideal for warehouse, distribution, manufacturing, or flex space users
- **Part of a Multi-Building Park** – Benefits from shared infrastructure and professional management in an established industrial development
- **Strong Regional Access** – Convenient proximity to highways, airports, and Metro Detroit's logistics network

For more information, please contact:

BEN CRABILL III
(313) 720-0990

ben3@crabillandcompany.com

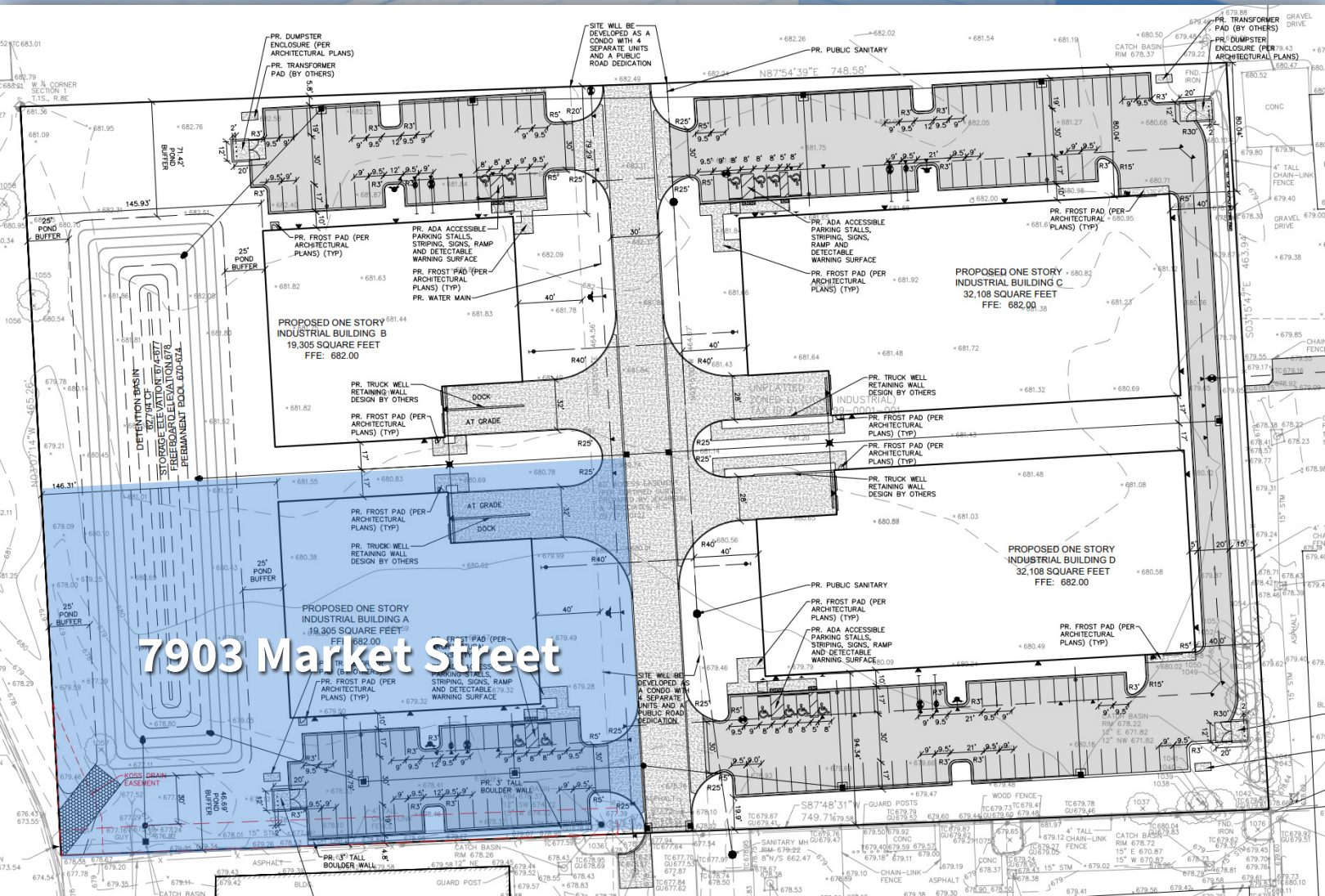
CRABILL & COMPANY

(734) 261-8200

33640 Schoolcraft Rd.

Livonia, MI 48150

SITE PLAN



For more information, please contact:

BEN CRABILL III
(313) 720-0990

ben3@crabillandcompany.com

CRABILL & COMPANY
(734) 261-8200
33640 Schoolcraft Rd.
Livonia, MI 48150